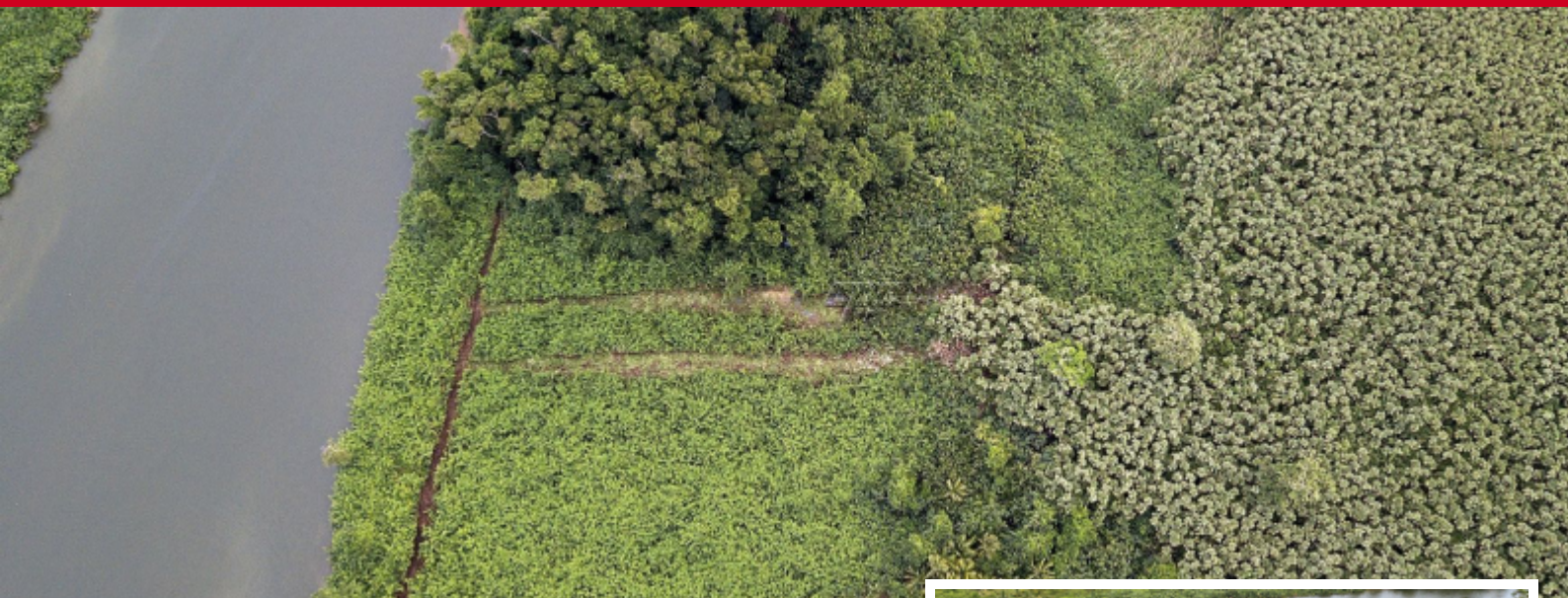


## FOR SALE



### Sittee River

**Price:** USD 165,000

**MLS Number:** loo1

**Location:** Stann Creek District

**Lot size:** 12.60 Acre

Experience the essence of Belize – where stunning natural beauty, warm tropical weather, serene beaches, and welcoming locals create an irresistible lifestyle. It's a place that captures hearts, and once you experience it, you might find yourself wanting to make this enchanting country your own. If you're dreaming of owning a piece of paradise, look no further than this remarkable 12.6-acre (5.1-hectare) property nestled along one of Belize's most picturesque rivers, the Sittee River. Boasting 730 feet (222.5 meters) of pristine riverfront, this land offers direct access to the river's peaceful flow, with the added benefit of being close to the mouth and just a short distance from Belize's breathtaking barrier reef and cays. The property has already been divided into four equal riverfront parcels at the front, giving you plenty of options. You could keep one lot as your private oasis, sell off the others for a return on investment, or even turn the whole property into your dream eco-lodge or family retreat. The possibilities are as endless as the natural beauty surrounding you.

[Read more on our website](#)

