

FOR SALE



Parcel 2857 Crimson Park

Price: USD 159,000

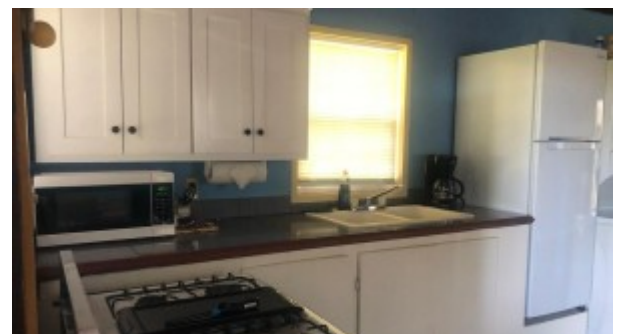
MLS Number: H1020

Location: Stann Creek District

Lot size: 0.12 Acre

Bedrooms: 1

Escape to the Simple Life in this studio-style cabana, where you can gaze at the majestic Maya Mountains and tranquil waterways while gently swaying in your hammock. This elevated home boasts a spacious bathroom with a spacious walk-in tiled shower, a fully equipped kitchen, sliding windows, and a large, inviting veranda. It is the perfect winter retreat, offering affordability and a chance to disconnect from the chaos of everyday life. This home is connected to power and water, and even has income potential while you are away. Embrace the simplicity and serenity of this idyllic oasis.



[Read more on our website](#)

