

SOLD



Palmaya Woods Large Lot

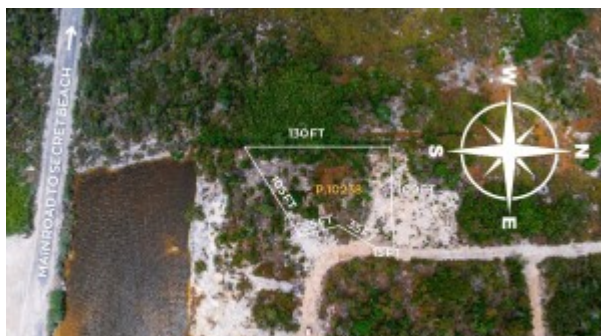
Price: SOLD

MLS Number: P.10238.JM

Location: Belize District

Built up size: 9,513.00 Sq Ft

Prime Residential Lot in Palmaya Woods, Secret Beach. Welcome to Palmaya Woods, an exclusive enclave in the coveted Secret Beach area. Parcel 10238 is a standout opportunity, spanning 9,513 sq. ft. — larger than most residential lots in the community. Located just north of the road between Wapo's and Roadkill Bar, Palmaya Woods offers peace and privacy while keeping you only a 5–8 minute drive from the main Secret Beach area or 15 minutes to the east side of the island. Priced at \$45,000 USD, this lot offers exceptional value at just \$4.74 per sq.ft, and seller financing is available, reach out for the financing details—making it easier than ever to secure your spot in one of Ambergris Caye's most desirable neighborhoods. Parcel 10238 represents a great opportunity for residential development or long-term investment in the Secret Beach Area.



[Read more on our website](#)

